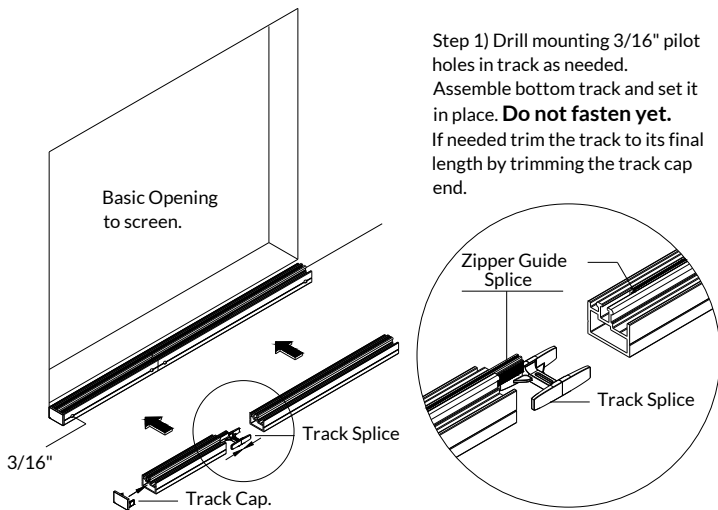
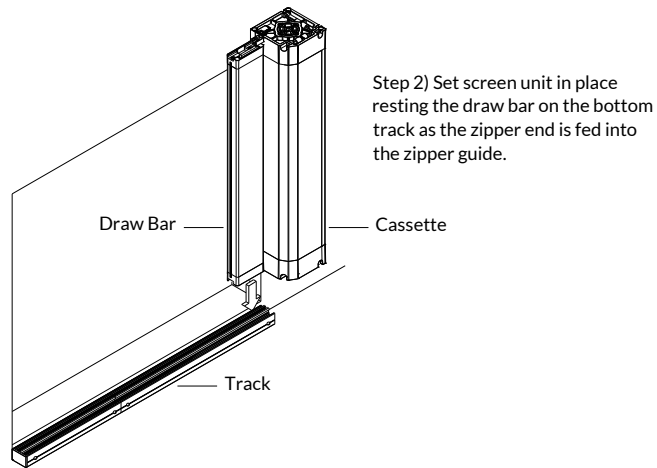


Mirage 3500

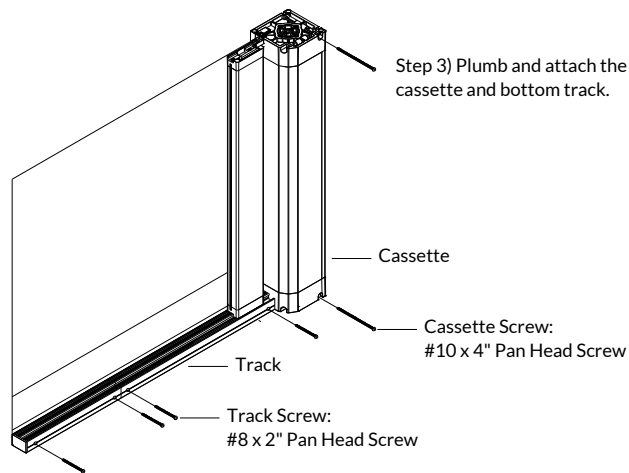
Basic Installation



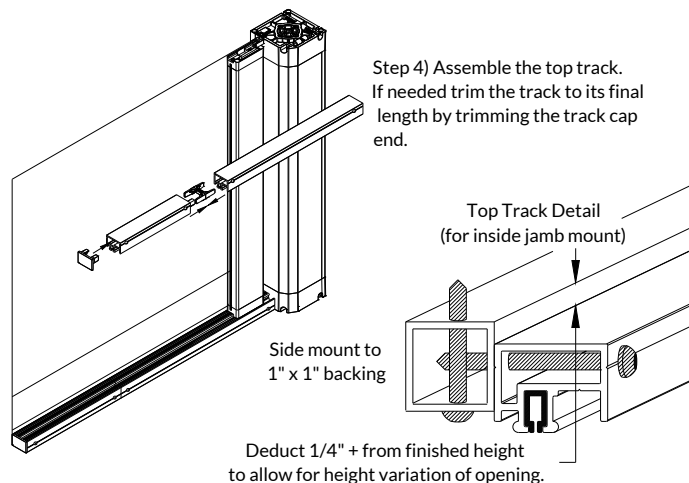
Step 1) Drill mounting 3/16" pilot holes in track as needed. Assemble bottom track and set it in place. **Do not fasten yet.** If needed trim the track to its final length by trimming the track cap end.



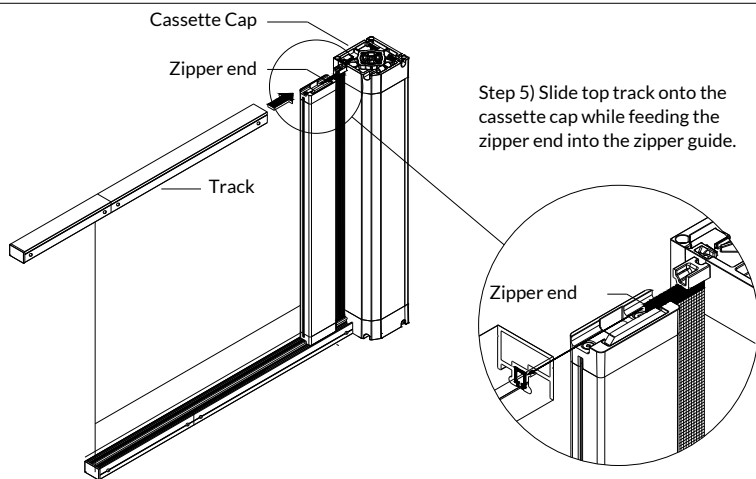
Step 2) Set screen unit in place resting the draw bar on the bottom track as the zipper end is fed into the zipper guide.



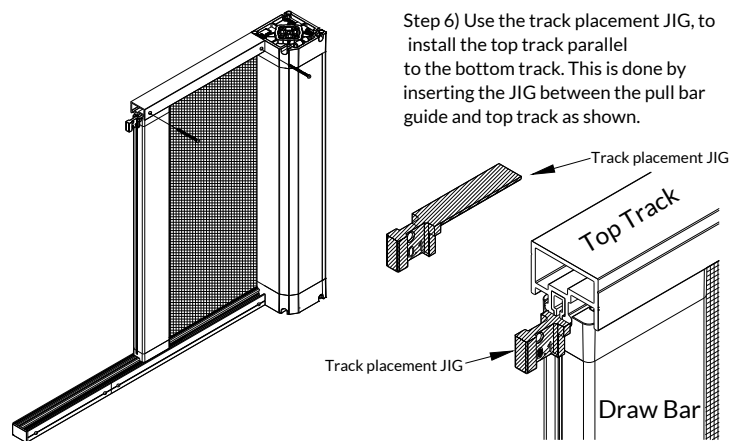
Step 3) Plumb and attach the cassette and bottom track.



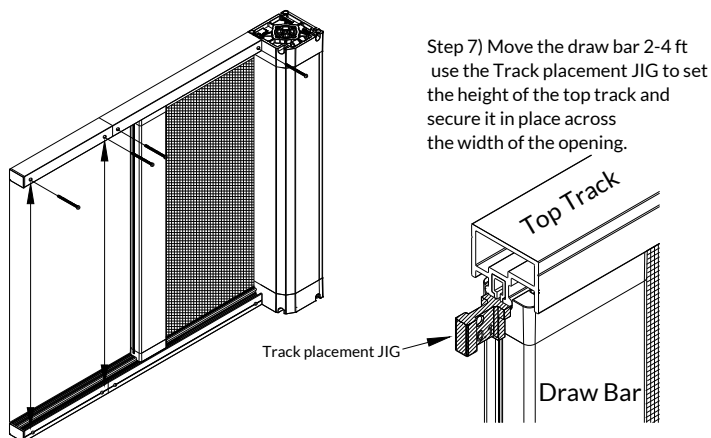
Step 4) Assemble the top track. If needed trim the track to its final length by trimming the track cap end.



Step 5) Slide top track onto the cassette cap while feeding the zipper end into the zipper guide.



Step 6) Use the track placement JIG, to install the top track parallel to the bottom track. This is done by inserting the JIG between the pull bar guide and top track as shown.



Step 7) Move the draw bar 2-4 ft use the Track placement JIG to set the height of the top track and secure it in place across the width of the opening.

Step 8) Attach Handle and set stop location.

