

MIRAGE 3500

Key Product Information

mirage
screen systems

Version 1.0

January 2022

(855) 488-7655

info@miragescreensystems.com

Contents



- 1** Applications
- 2** Components
- 3** Specifications
- 4** Color Options
- 5** Fabrics
- 6** Shipping Information



Applications



The 3500 can be applied to:

- Bi-fold doors
- Multi - panel sliding doors
- French Doors



Applications - Pt.2

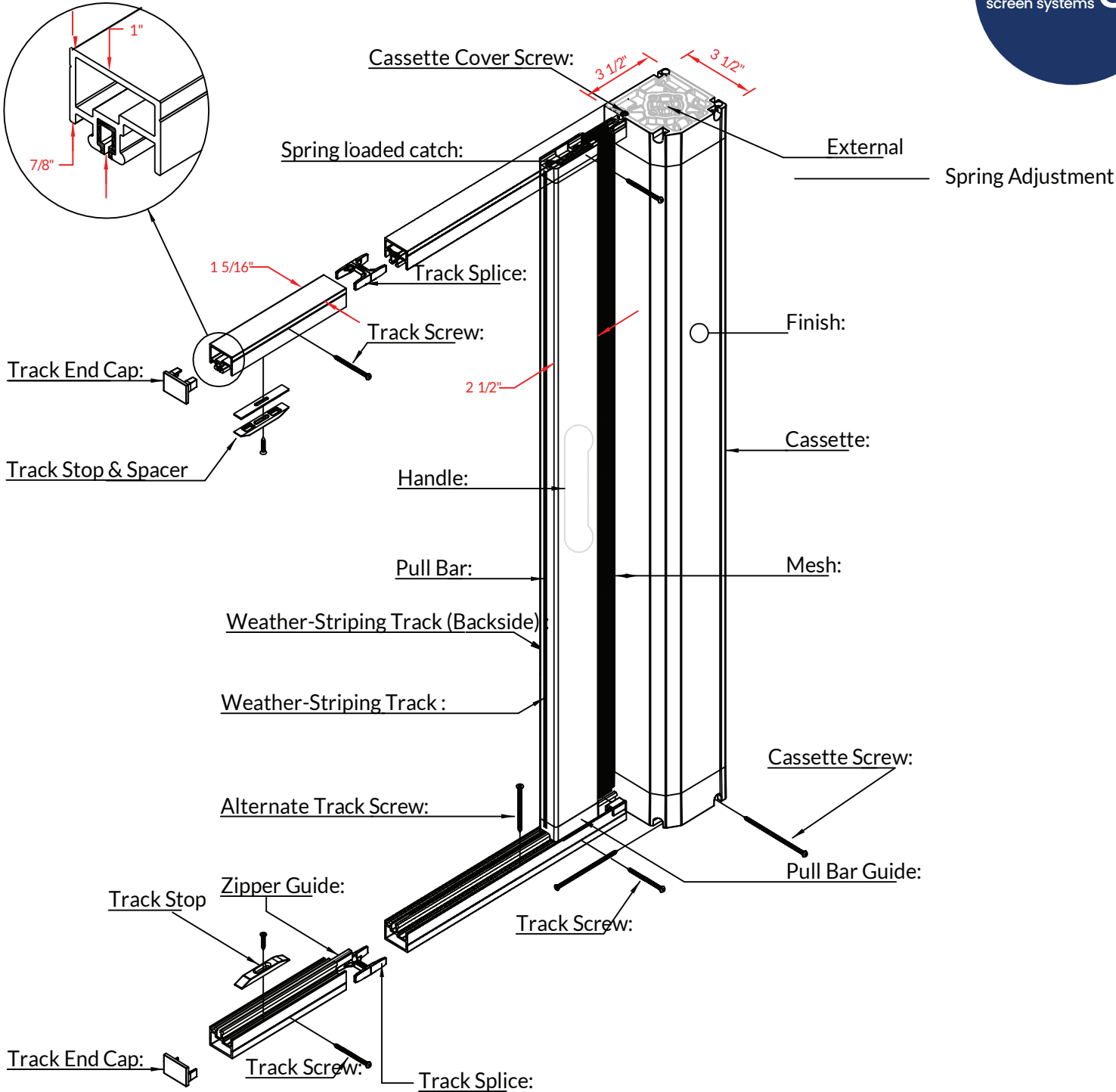


The 3500 can be applied to:

- Screen rooms
- Other large openings



Components



Specifications



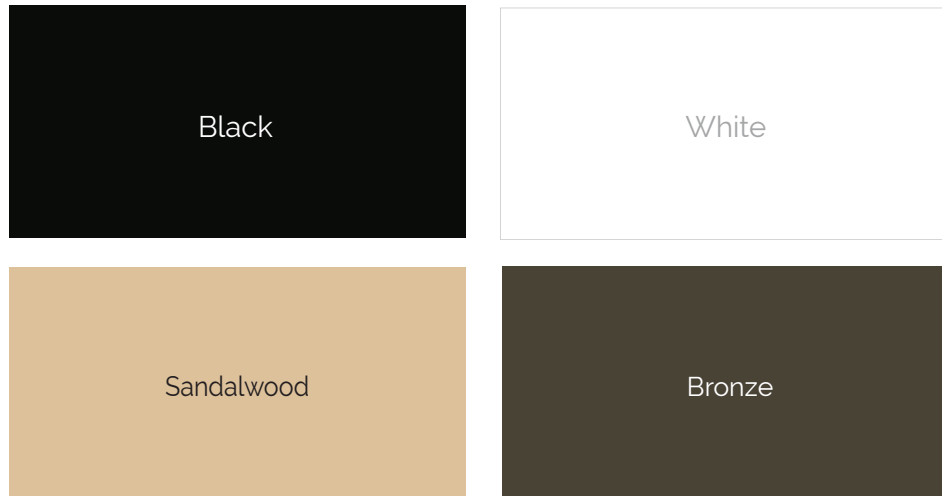
- Max 14' Pull (28' French/Double)
- Max 10' height
- Adjustable track stops
- Choice of handle:
 - Standard
 - PivotPro
 - Recessed



Color Options



Standard Colors



Non- Standard Colors

Extra charge applies.

- Linen Cream, Ex Pebble Grey, Slate Grey, Tudor Brown
- Mirage's 18 diamond series colors.

Custom Colors

All RAL custom colors available. Consult your sales rep for pricing.

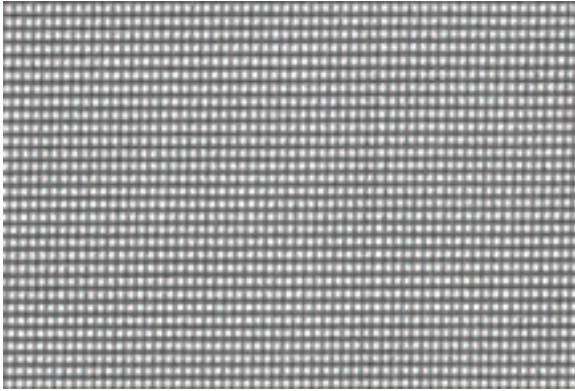
Plastic Colors

White and black plastics are available (Housing caps & pull bar guides).
Handles are available in all standard and non-standard colors.

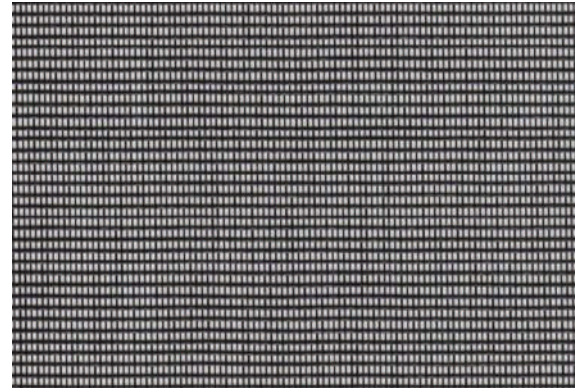
Fabrics: Insect Control



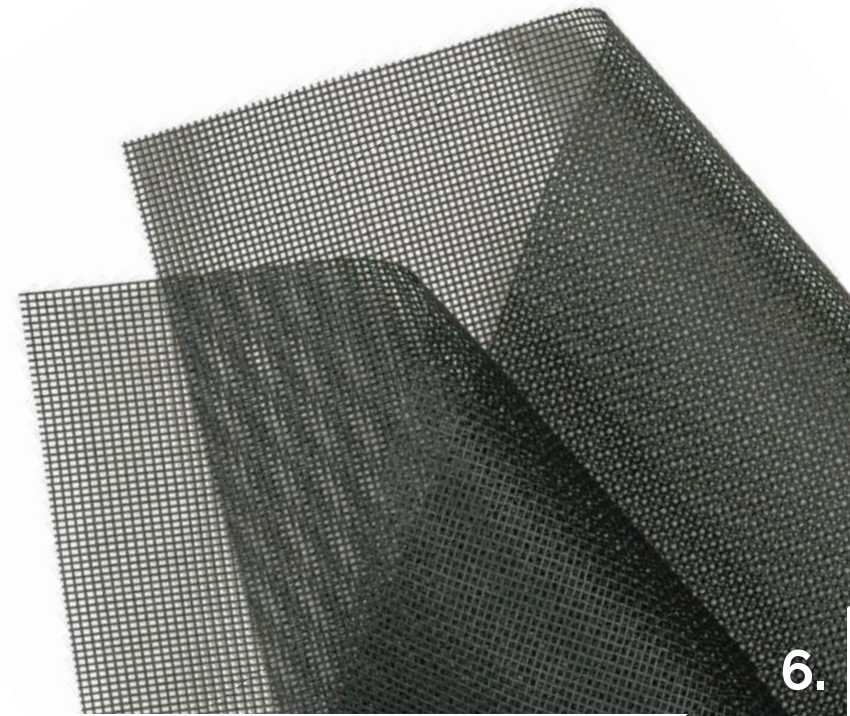
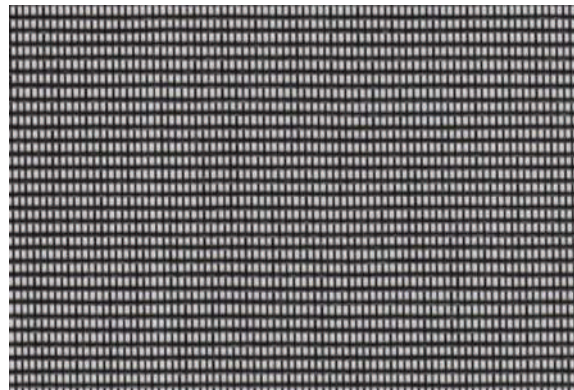
Phifer Stiff Fiberglass 18x14



Phifer NoSeeum Fiberglass



Phifer TuffScreen



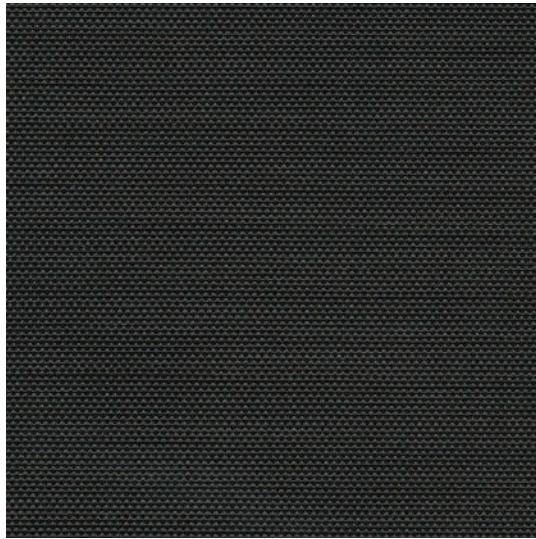
PRODUCT CERTIFIED FOR
LOW CHEMICAL EMISSIONS
UL.COM/GG
UL 2818



Fabrics: Sun Control

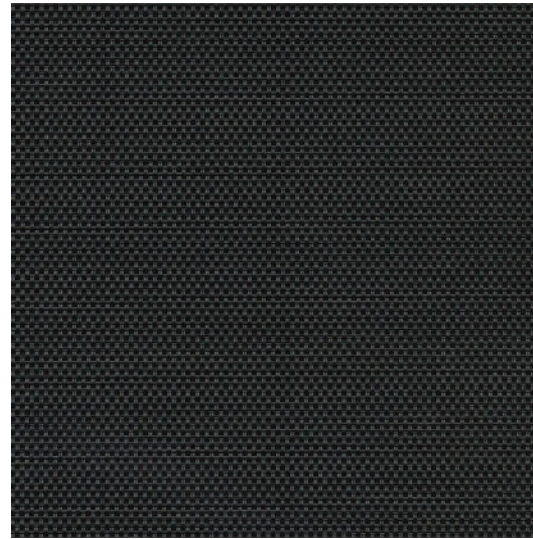


Suntex 90



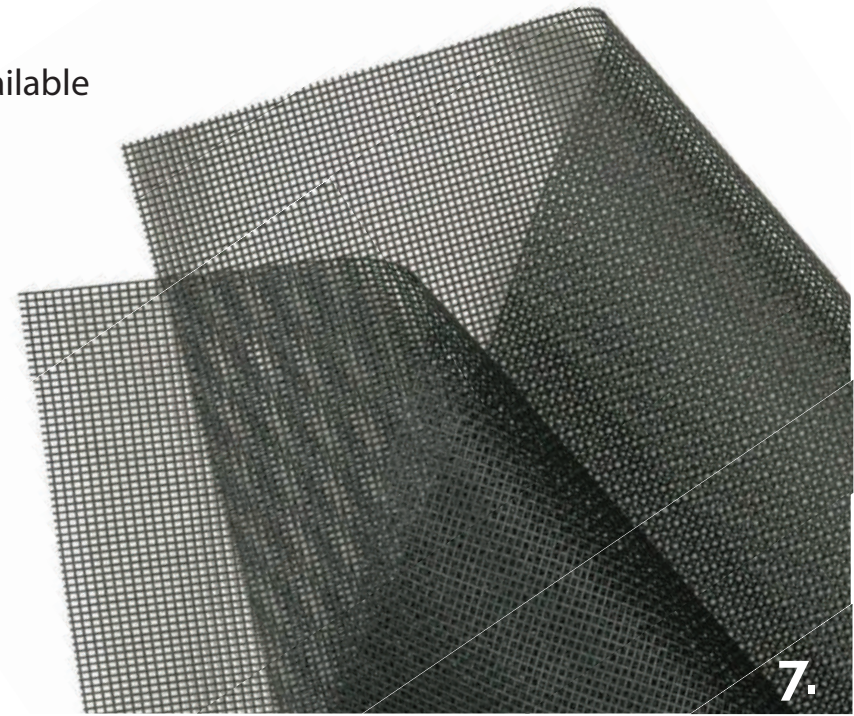
Charcoal shown
Other colors available

Suntex 95



Charcoal shown
Other colors available

Note: Sun Control fabrics may result in maximum pull being less than 14 ft.



PRODUCT CERTIFIED FOR
LOW CHEMICAL EMISSIONS
UL COMIGG
UL 2818



Shipping Information



- Units under 8 ft
 - Shipped via Fedex
 - Cost is approx \$100 per unit
 - Ship time is 2-3 days
- Units over 8ft
 - Shipped via LTL
 - LTL rates apply

Shipping Timeline:

- To produce units 2-4 weeks
- Ship time 2-10 days

Non-standard/custom orders extend the above timeline.

